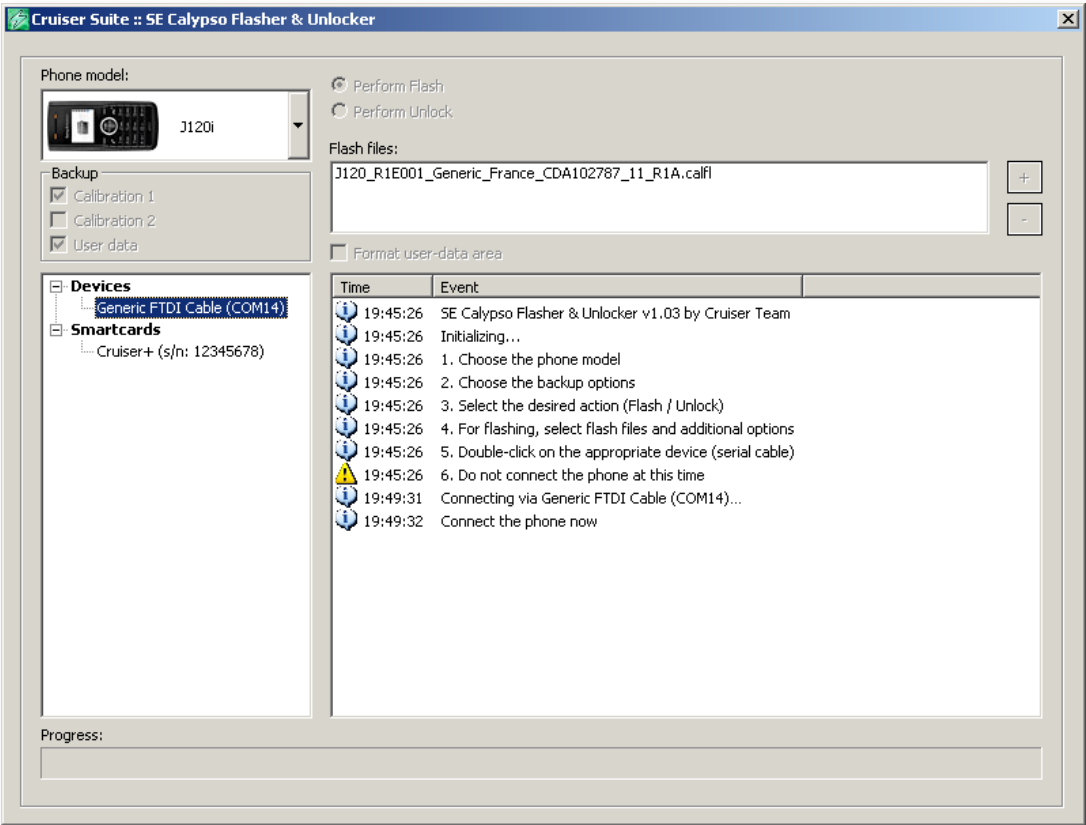
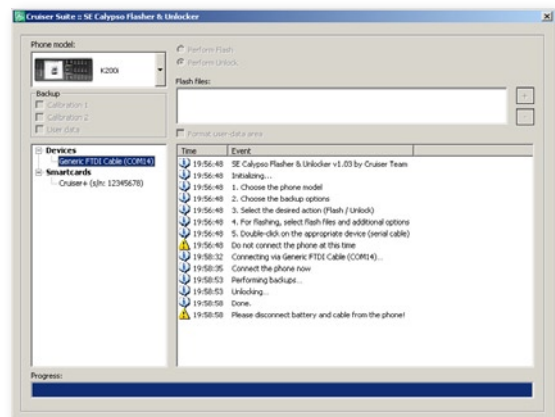
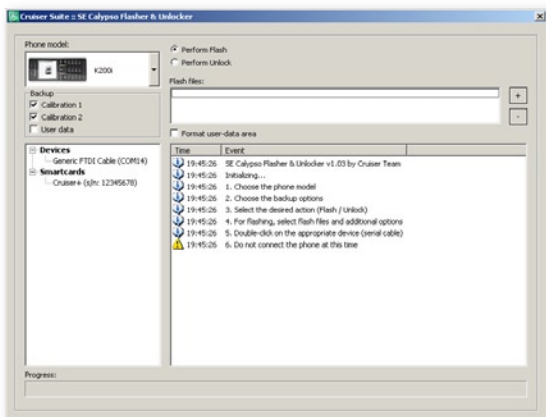


# Cruiser Suite SE Calypso Flasher & Unlocker User's Guide



# Contents

Introduction	3
Installation	4
Cable	5
Flashing / Unlocking procedure	6



# Introduction

Cruiser Suite SE Calypso Flasher & Unlocker is an application for flashing and unlocking SonyEricsson phones based on [Calypso](#) platform.

Currently supported phones:



K200i



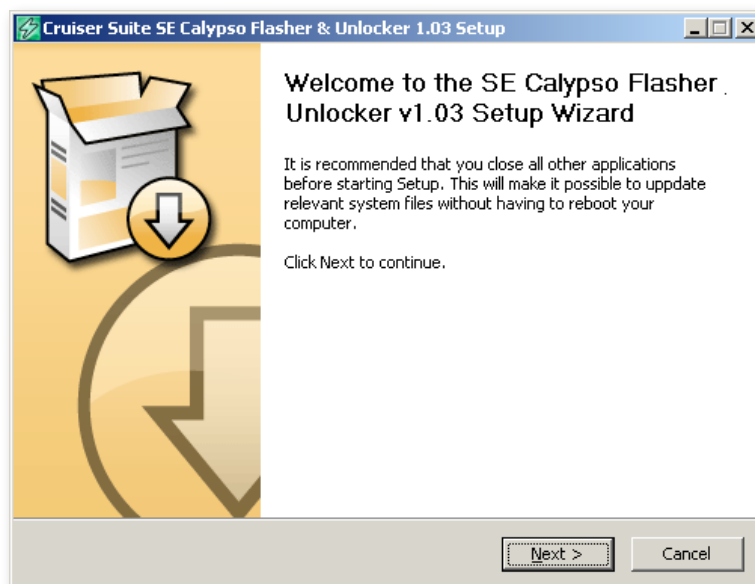
K220i



J120  
(flashing only)

# Installation

1. Run installer `SeCalypsoFlasherUnlocker_v1.03-installer.exe`
2. Follow the installation wizard's instructions



# Cable

Cruiser Suite SE Calypso Flasher & Unlocker supports only connection via serial cable. We recommend to use standard [Cruiser serial cable](#), with the “flash voltage” pin disconnected.

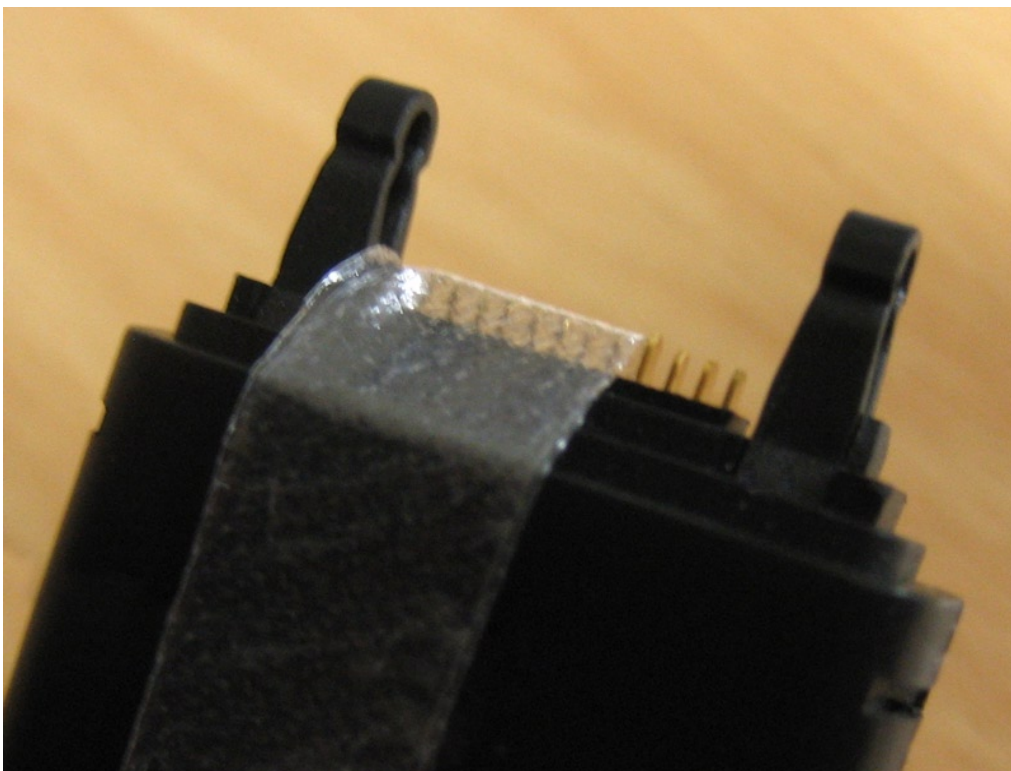
There are two versions of the cable:

1. With the “flash voltage” pin cabled out to the external power supply

If you use this option, leave the alligator clips open.

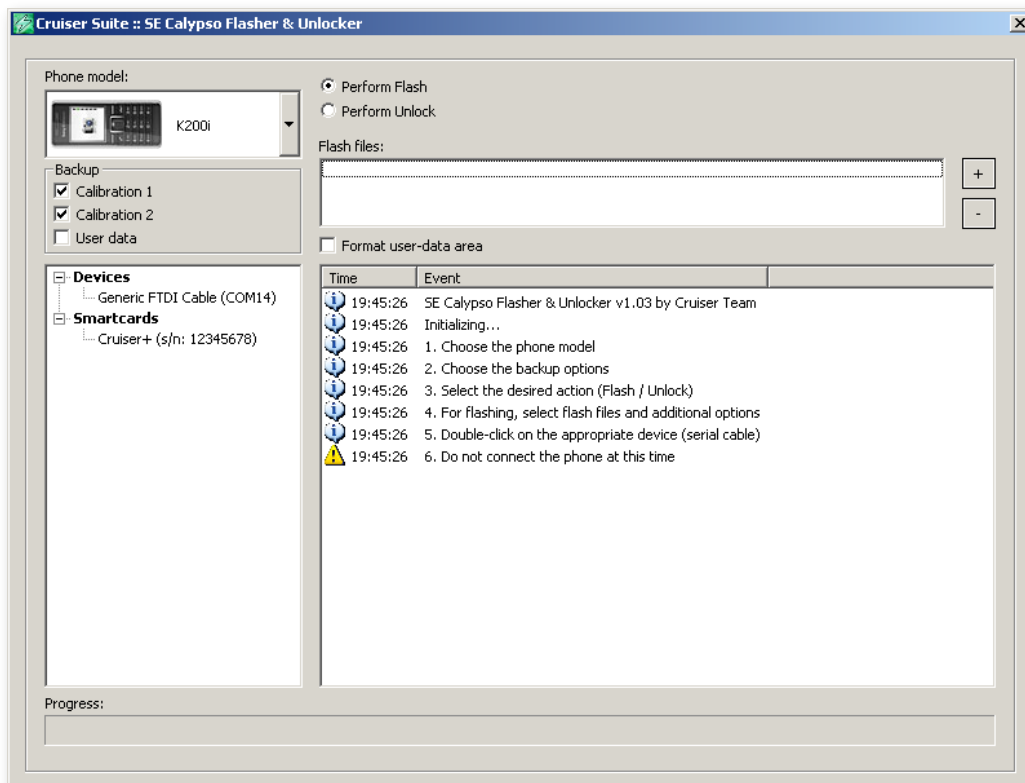
2. With the “flash voltage” pin hard-cabled

If you use this option, you can cover the flash voltage pin with an insulator (see picture). Flash voltage pin is the fifth pin from right, immediately next to the longer pin.



# Flashing / Unlocking procedure

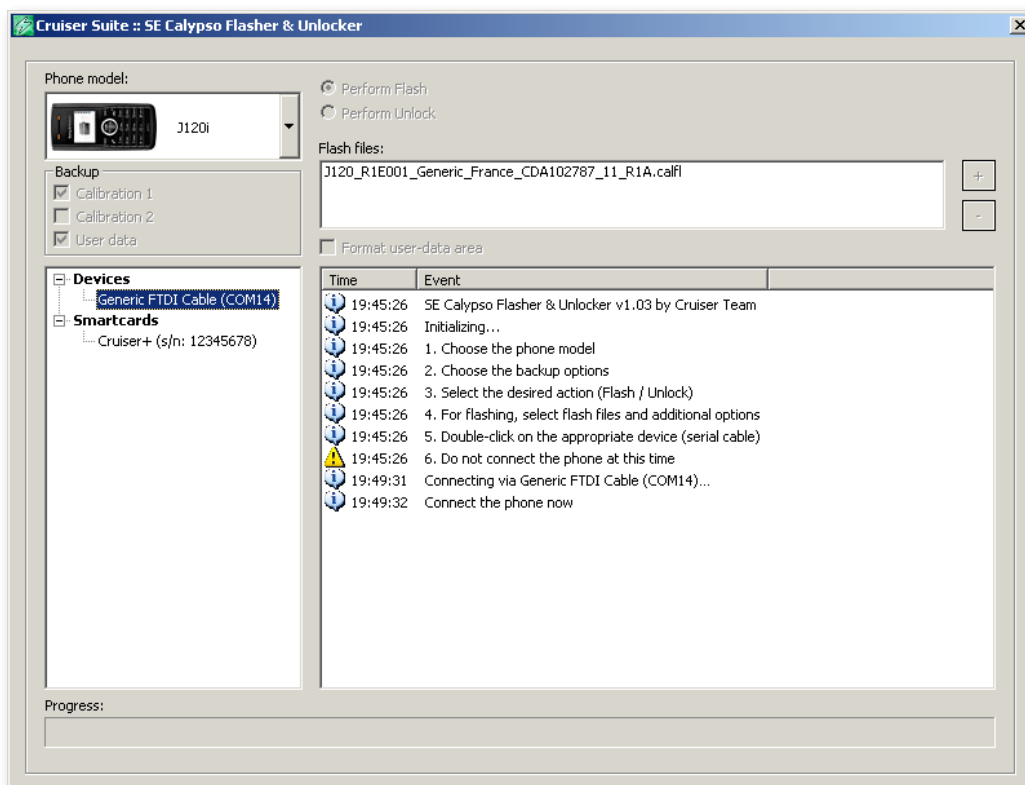
1. Make sure Cruiser+ Dongle is plugged in your computer.  
Card ID must end with "-07".
2. In case you don't have the required flash file, download it from Cruiser+ Support Area.
3. Run `SeCalypsoFlasherUnlocker.exe`



4. Choose the phone model.

continued ►

5. Select the backup options.
6. Select the desired action – Flash or Unlock.
- 7.a In case you perform flashing, select the flash files and additional options.
- 7.b In case you perform unlock, make sure that the phone has not been previously formatted (with the format user data option). If yes, power the phone on and off and remove/install battery.
8. Double-click on the appropriate cruiser serial cable.
9. Connect the phone when you are asked to do so (not earlier!)



10. Wait while the program performs the desired actions..
11. Disconnect phone and reconnect its battery!